

# SLIDING GLASS DOOR LABORATORY/PHARMACY REFRIGERATORS

Project Name:

Model Specified:

Location:

Item No:

Quantity:

# Continental

SCIENTIFIC

539 Dunksferry Road  
Bensalem, PA 19020  
[www.continentalscientific.com](http://www.continentalscientific.com)

Toll-Free: 800-523-7138  
Phone: 215-244-1400  
Fax: 215-244-9579

S2RNSGD



## Standard Model Features

### REFRIGERATION SYSTEM

- Stainless steel front, aluminum end panels & interior
- Self contained, performance-rated refrigeration system
- Natural, environmentally-safe, high-efficiency R-290 refrigerant
- Expansion valve system
- Automatic, electric condensate evaporator

### CABINET ARCHITECTURE

- 3" Non-CFC polyurethane foamed-in-place insulation
- Heavy-duty epoxy-coated steel shelves
- Locking doors
- Magnetic snap-in door gaskets
- (2) 1/2" diameter probe access ports
- Attached 10 ft. cord & 90° hospital grade NEMA-5-15P plug
- Adjustable temperature control, range +2°C - +8°C, factory pre-set at +4°C
- 5" Casters

### MODEL FEATURES

- LED interior lighting
- Electronic controller w/ centigrade temperature digital display

## Options and Accessories

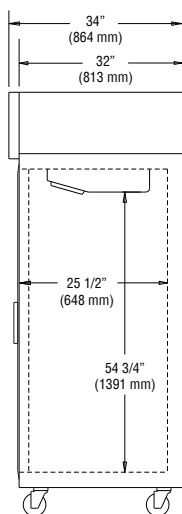
(upcharges and lead times may apply)

Adjustable legs	220/50/1 Voltage
Additional shelves	208-230/60/1 Voltage
Pass thru doors (-PT models)	7 Day temperature chart recorder
Rehinging of doors	Remote temperature logger
Half doors (-HD models)	Audible/visual temperature alarm w/ battery back-up & dry contact relay
Stainless steel exterior, aluminum interior (-SA models)	Export crating
Stainless steel exterior and interior (-SS models)	NIST thermometer (consult factory)

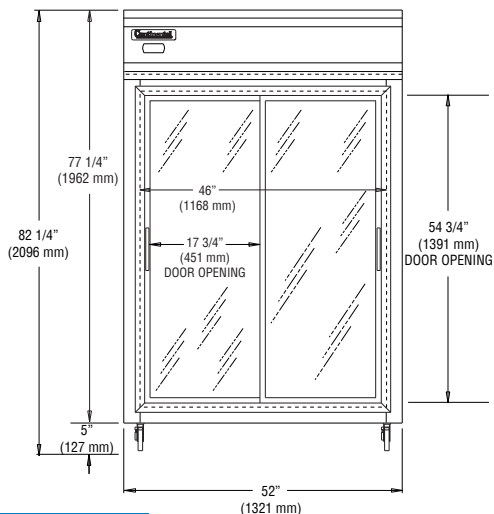
APPROVAL:

# SLIDING GLASS DOOR LABORATORY/PHARMACY REFRIGERATORS

## Line Drawings



S2RNSGD Side View



S2RNSGD Front View

# Continental

SCIENTIFIC

539 Dunksferry Road  
Bensalem, PA 19020  
[www.continentalscientific.com](http://www.continentalscientific.com)

Toll-Free: 800-523-7138  
Phone: 215-244-1400  
Fax: 215-244-9579

## Model Specifications

### DIMENSIONAL DATA

	S2RNSGD
Net Capacity (cu. ft.)	48
Width, Overall (in.)	52
Depth, Overall (in.) (incl. handles & bumpers)	34
Height, Overall (in.)	82 1/4
No. of Doors	2
No. of Shelves	8

### REFRIGERATION DATA

Condensing Unit (H.P.)	1/3
------------------------	-----

### ELECTRICAL DATA

Voltage	115/60/1
Feed Wires (incl. ground)	3
Total Amps	14.3
10 ft. Cord/Plug [attached]	Yes

### SHIPPING DATA

Weight (lbs.)	530
Height - Crated (in.)	85 1/2
Width - Crated (in.)	55
Depth - Crated (in.)	42

**Ship Weight** for -SA and -SS models is on average 5% higher than Standard models. Consult factory for shipping weight of these models.



Equipped with (1) 90° hospital grade NEMA-5-15P plug (varies by country)

### LOCATION OF 1/2" DIAMETER PROBE ACCESS PORTS:

- (1) Ceiling, front top left corner
- (1) Rear wall, top center

Consult factory for exact locations

Due to our continued efforts in developing innovative products, specifications subject to change without notice.

© Copyright 2021. Continental Refrigerator.  
A Division of National Refrigeration & Air Conditioning Products, Inc.

